

Setting up your PPTP VPN under Mac OS X 10.5 (Leopard)

Setting up PublicVPN access under Mac OS X 10.5 is simple. The following instructions go step-by-step through the creation process.

System Requirements

Before setting up the VPN, be sure your installation is up-to-date by running Software Update. At the time of this writing the latest Mac OS X version was 10.5.1.

Open the Network Control Panel

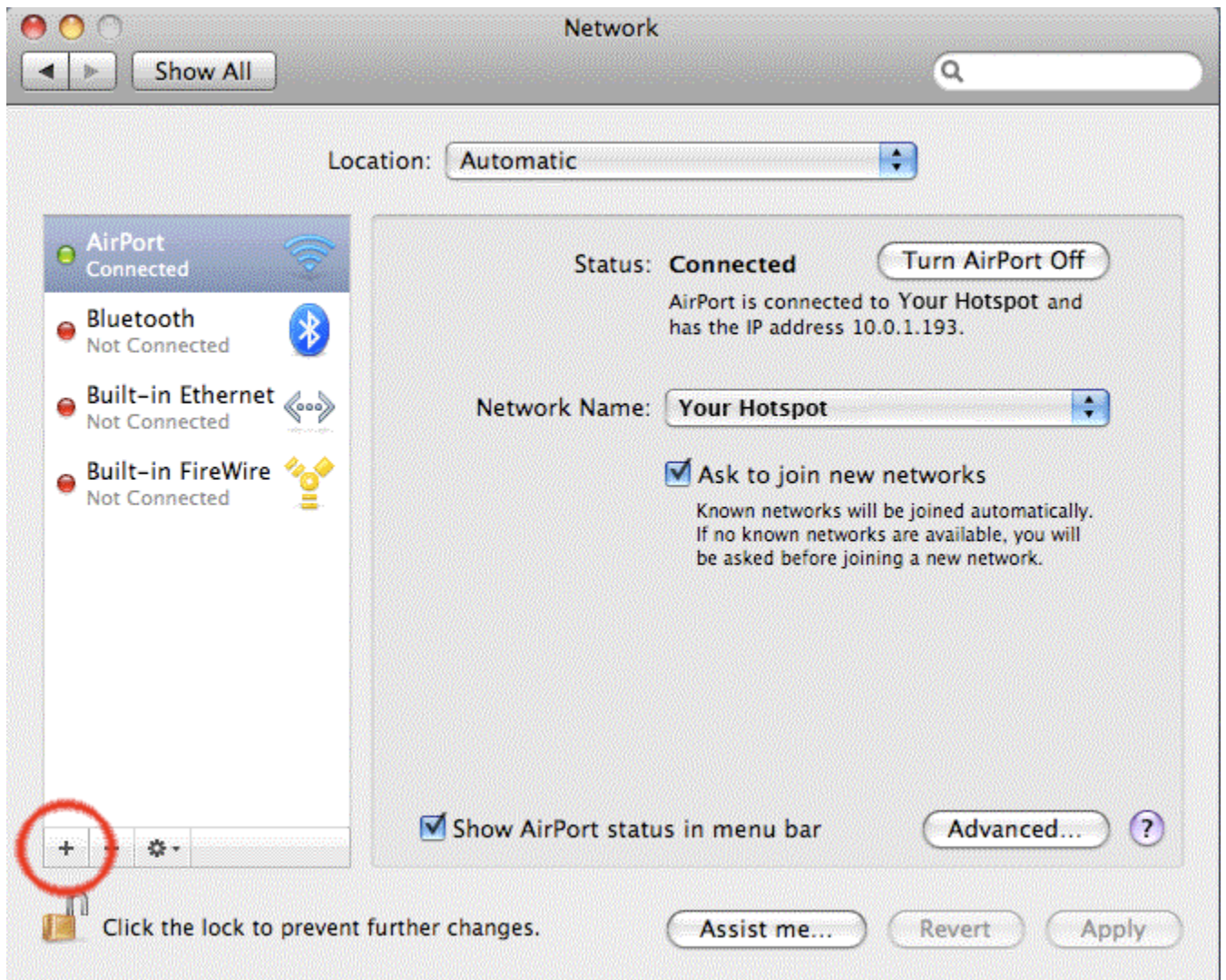
First, open the System Preferences by going to the Apple menu and choosing "System Preferences." Or choose "System Preferences" from the Dock.



Next, click on the 'Network' system preference.

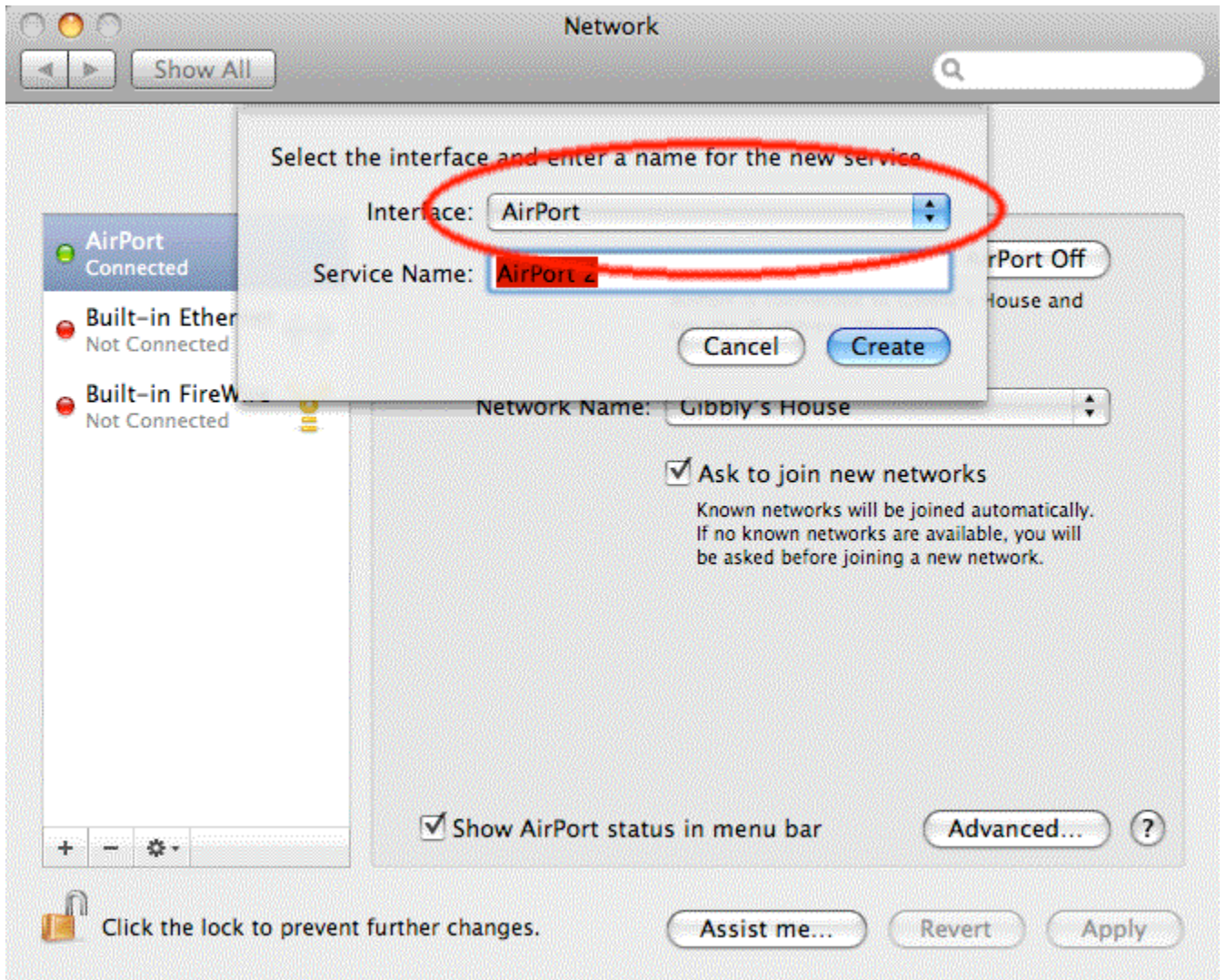
Make a new connection

In the 'Network' system preference there is a list of network connections on the left side. Click the '+' icon (highlighted in red) to make a new connection for the VPN.

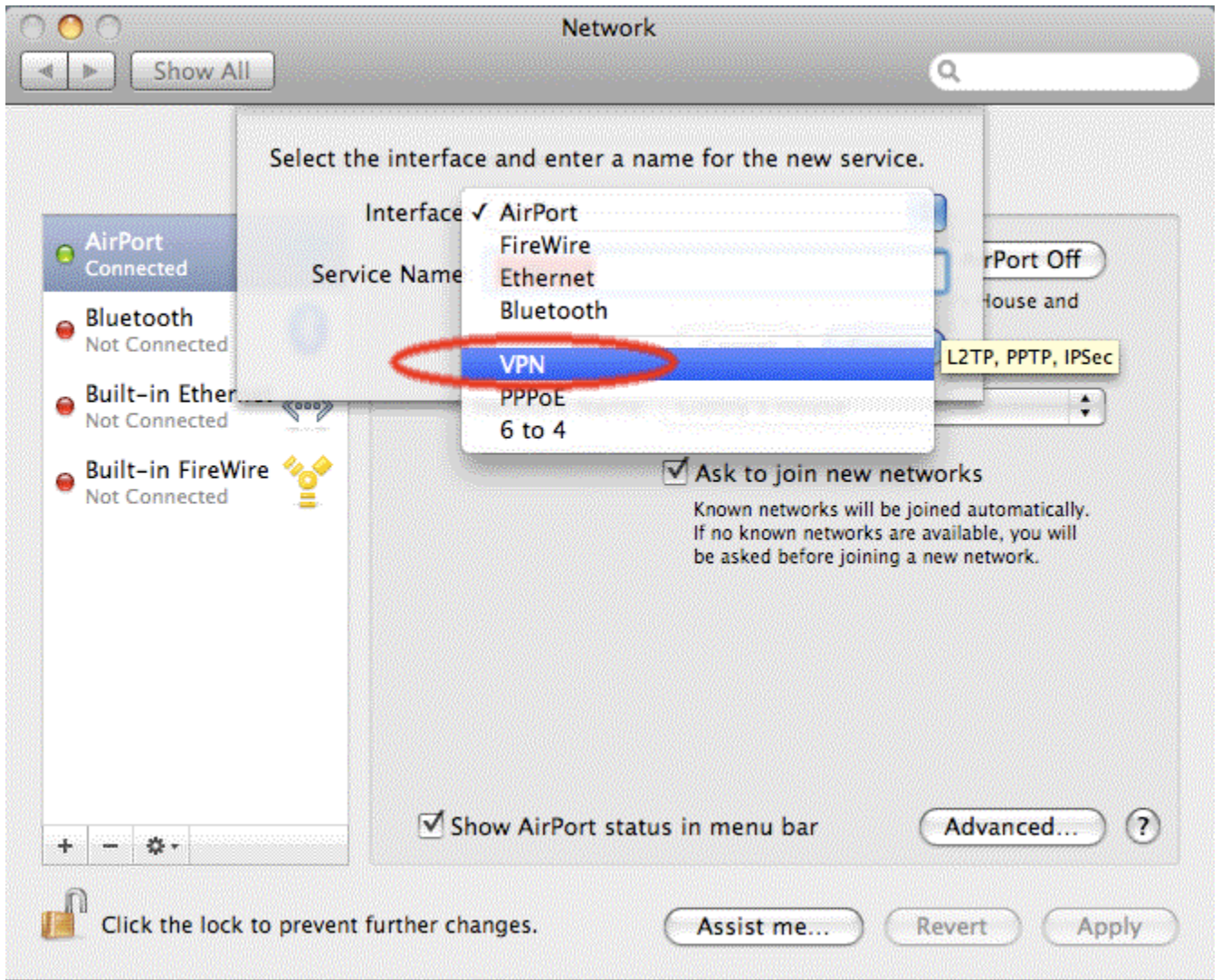


Set the Interface to 'VPN' and set the Connection Type and Name

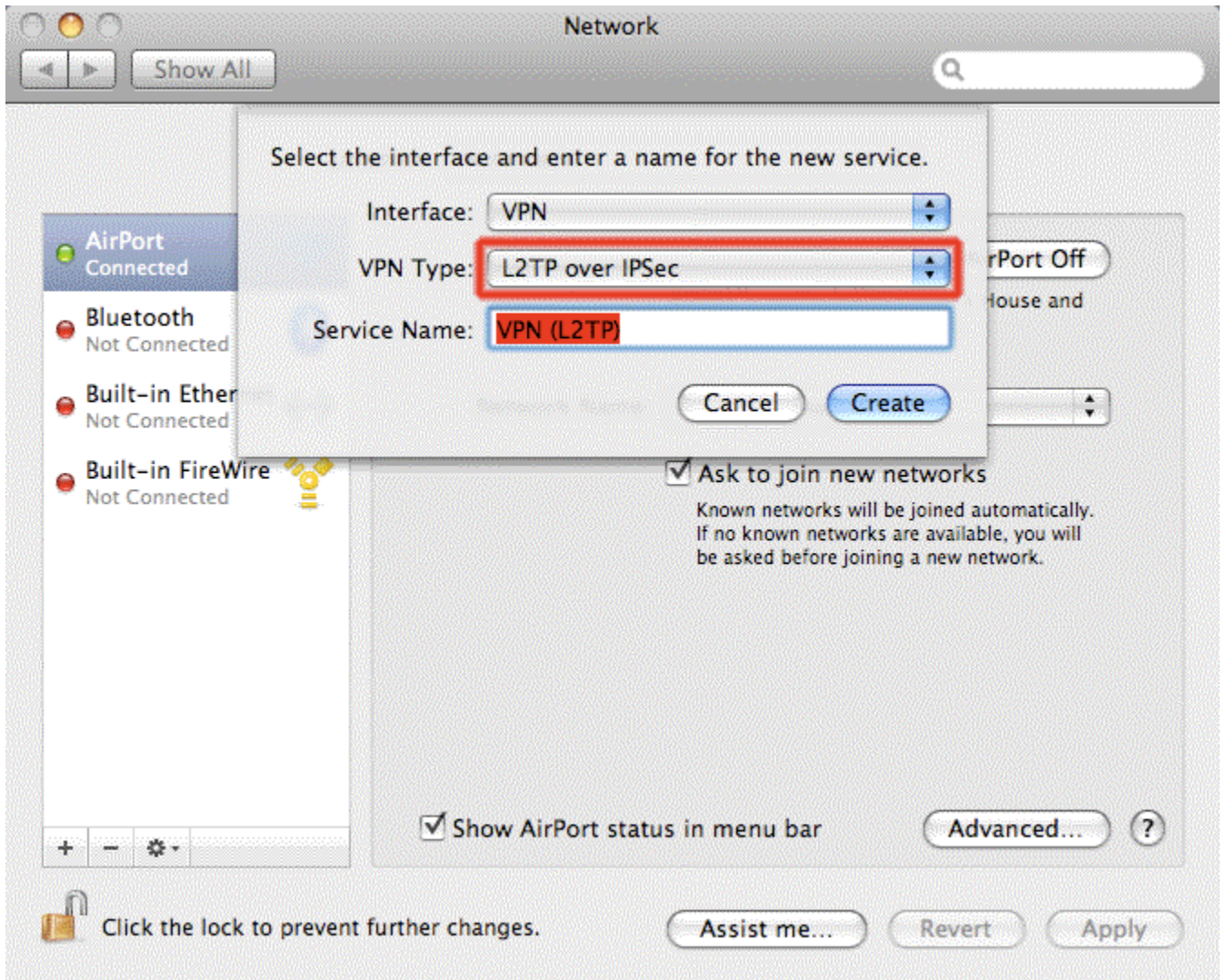
When you click the '+' icon, a new service sheet appears. Click on the 'Interface' popup menu to see the list of choices.



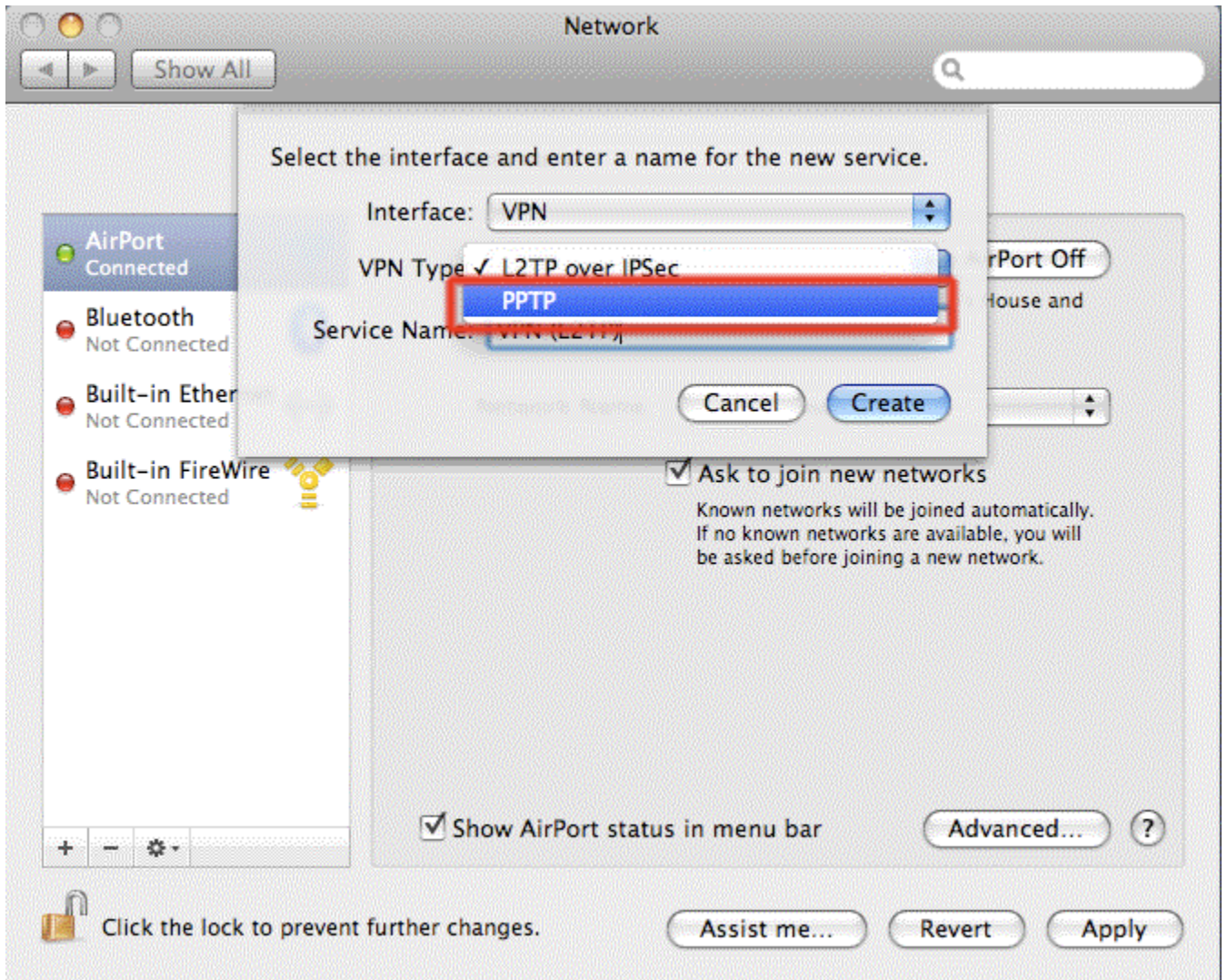
In the list, select 'VPN'.



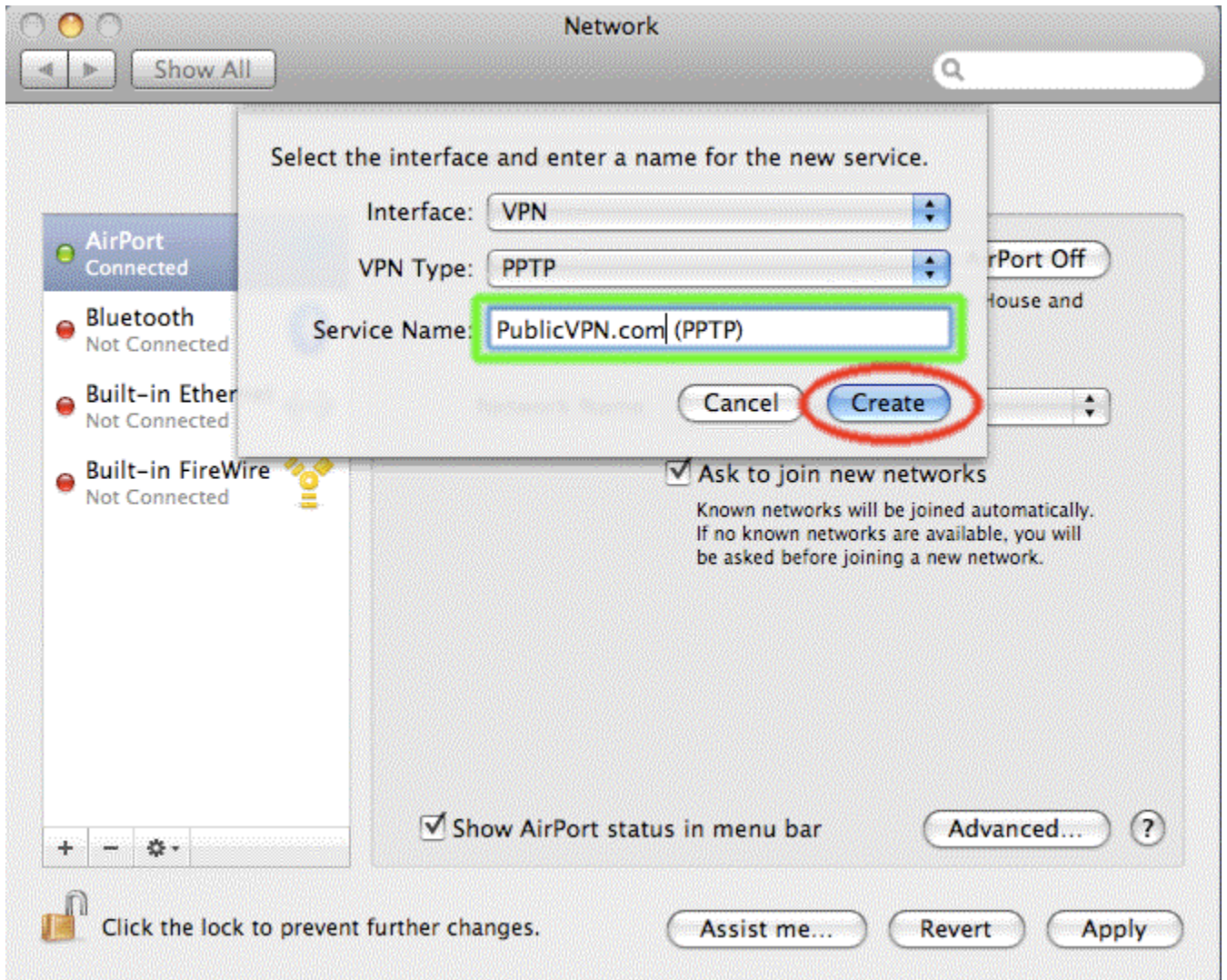
The 'VPN Type' should automatically be set to 'L2TP over IPSec', as seen in the picture below. Click on the "VPN Type" popup menu.



Choose "PPTP"



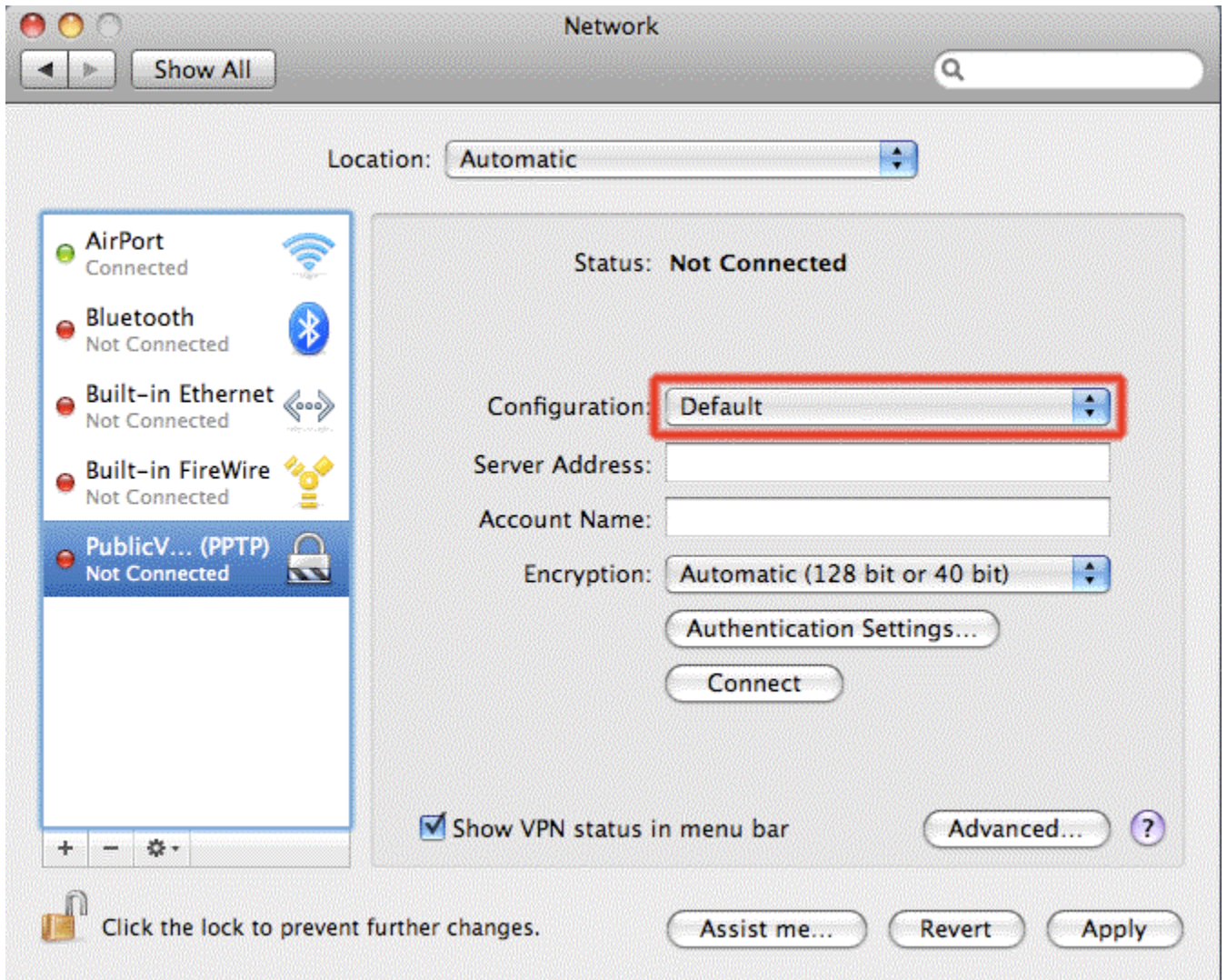
Next, set the Service Name to "Anything, sunny-net etc... (PPTP)" by typing into the green box (see below).



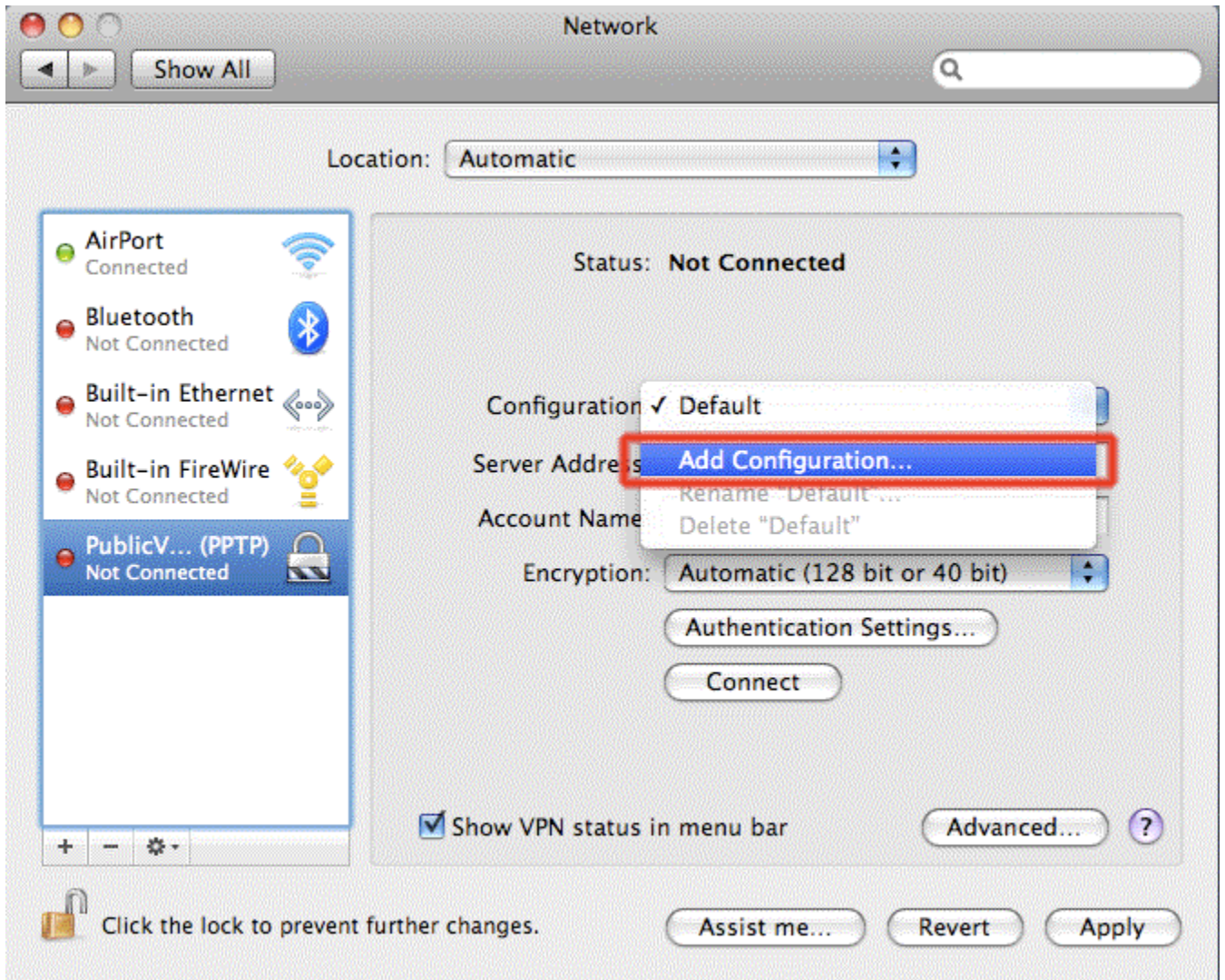
The screen should now look like this. Click 'Create' to create the new connection.

Make a New Configuration

Now that you have a VPN connection, you'll need to make a Configuration for it. Click the 'Configuration' popup menu.



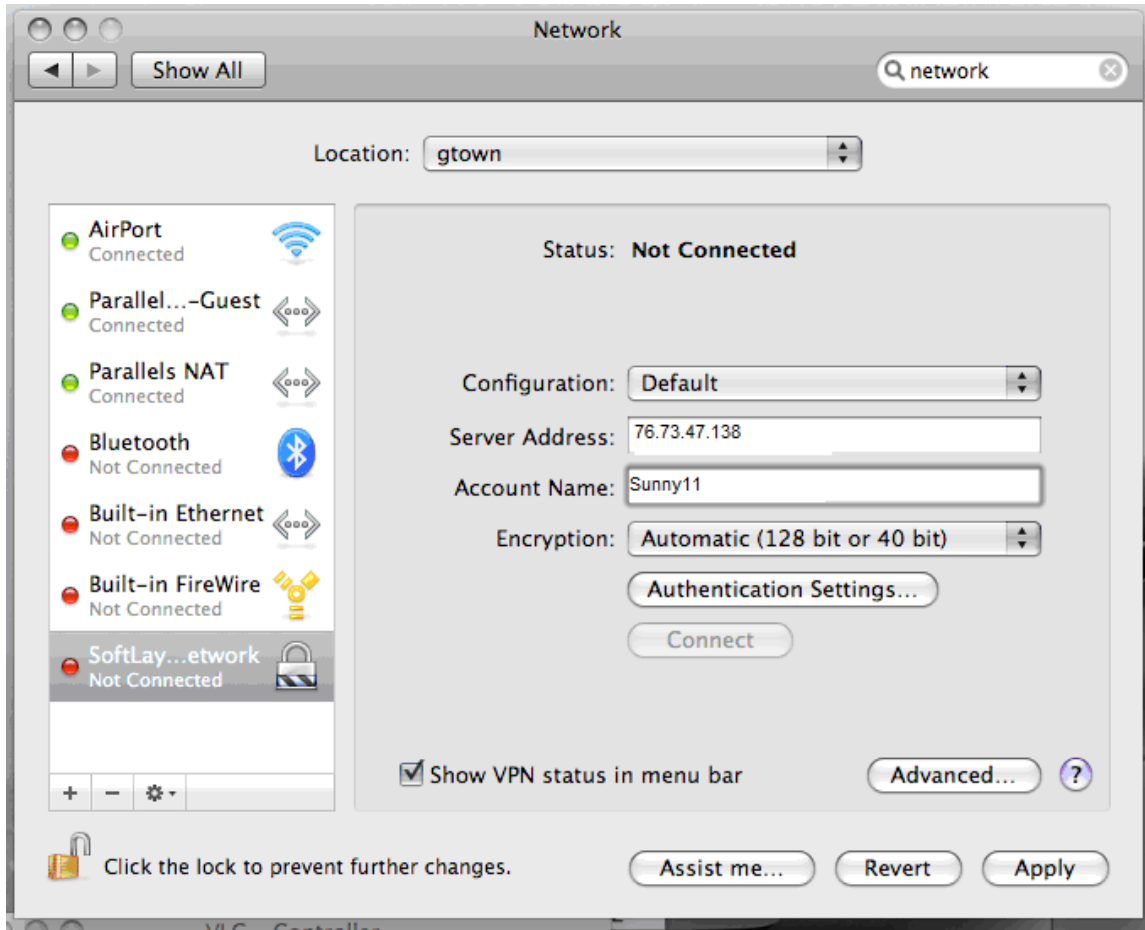
If you've set the VPN up before, you may see configurations in the list. Be sure to click "Add Configuration..." to add a PublicVPN.com configuration (see below).



In the next screen, type 'PublicVPN.com' for the configuration name. Then click 'Create'.

Set Server and Account Info

Now that we've created the configuration, we can start entering your VPN information.



Enter the Supplied Server IP Address, and the username in the Account Name field.

click on **Authentication Settings...**, in the menu that appears select **Password**, type in your password and select **OK**.

Click Apply, your connection is setup!