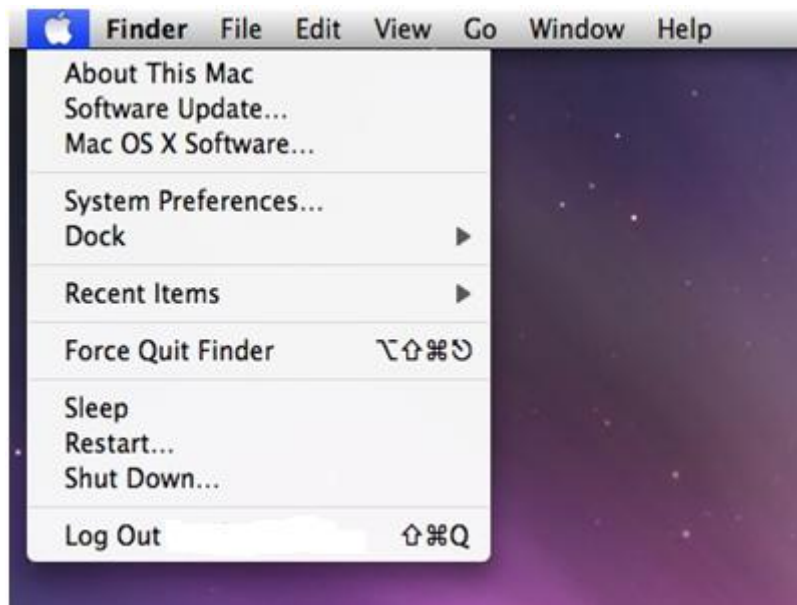


PPPOE Setup for Mac

1. Inside the Apple menu, choose System Preferences.



2. Click on the Network icon.



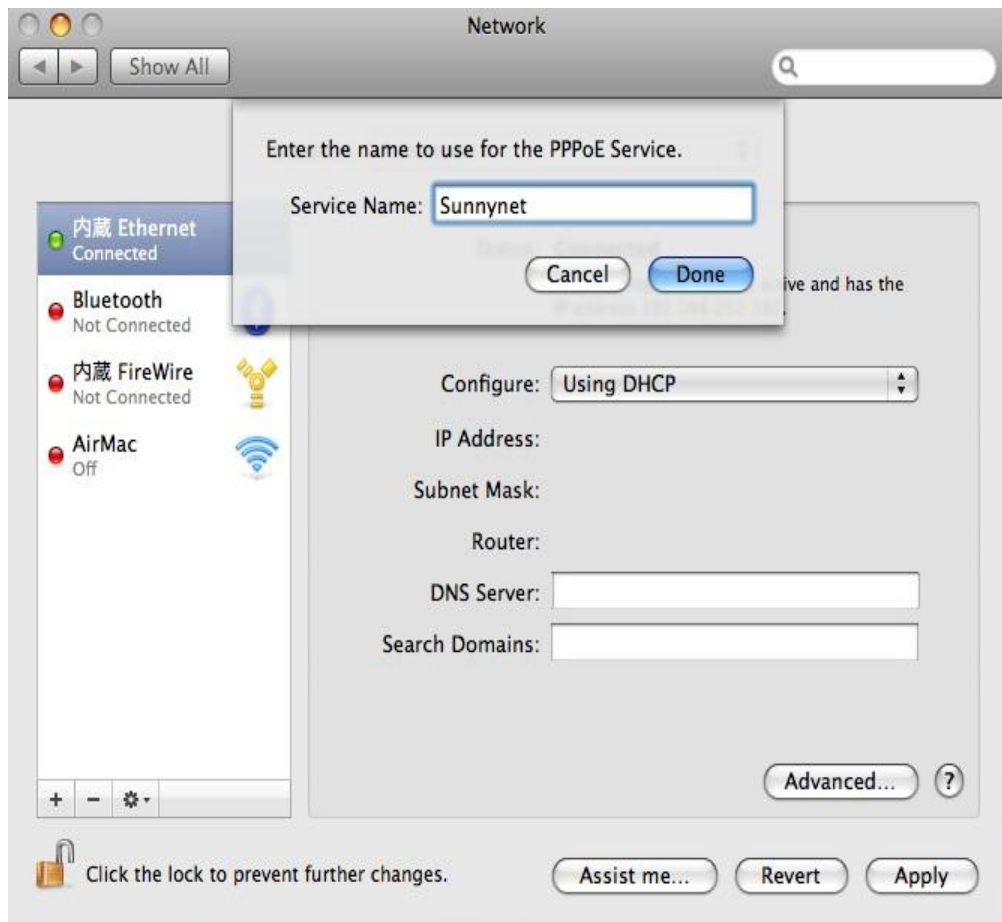
3. The following screen will appear, click Built-In Ethernet.



4. Click the "Configure" drop down menu. At the bottom of the list, click on Create PPPOE Service.



- When you click on Create PPPOE, it will ask you for the connection name, type "Sunnynet" in the box that appears. Press the "Done" button when completed.



- In the box to the left you should now have a Sunnynet PPPOE connection created, it will automatically be chosen. Type in your Sunnynet Username and password in the Account Name and Password boxes. When completed, press the "Apply" button at the bottom.



7. After pressing the apply button, it will allow you to press the “Connect” button and it will connect your Sunnynet Connection.



Place a check in “Show PPPoE status in menu bar” to place an icon in the menu bar at the top of the screen.