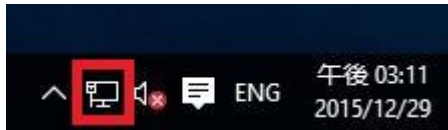


# PPPoE Setup for Windows 10

## Step 1:

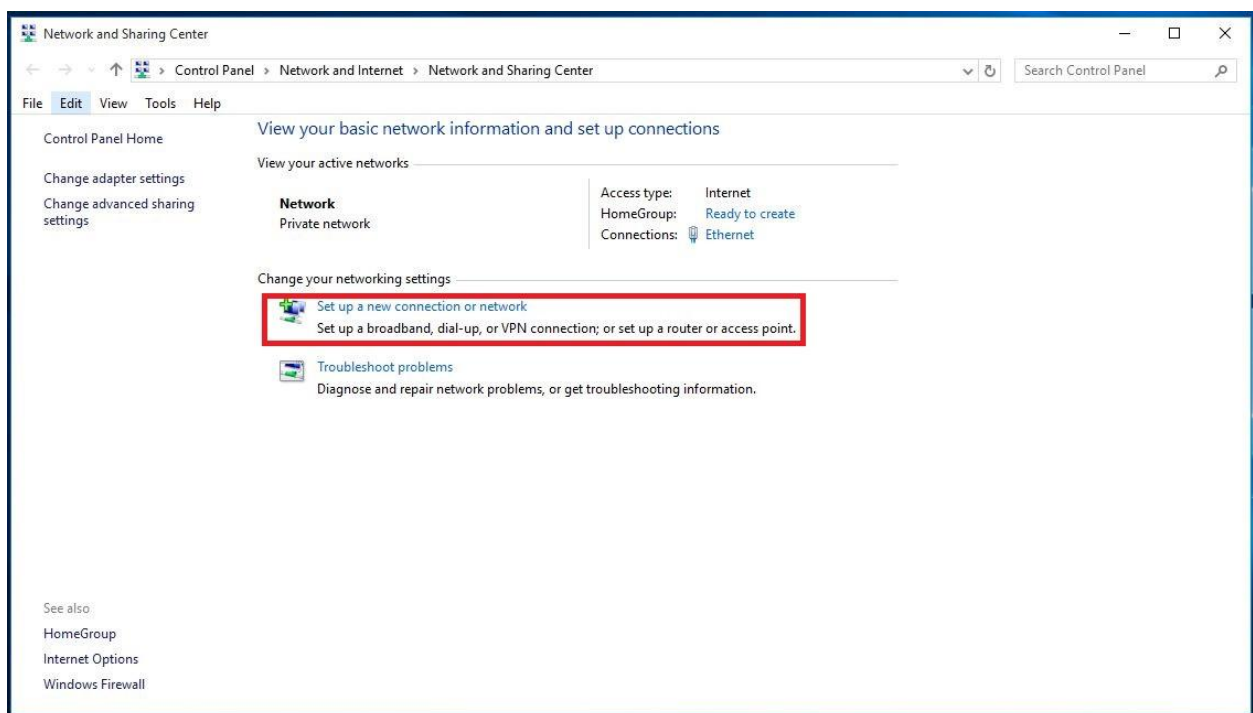
Right click on the networking icon in your taskbar,



And then click on 'Open Network and Sharing Center'

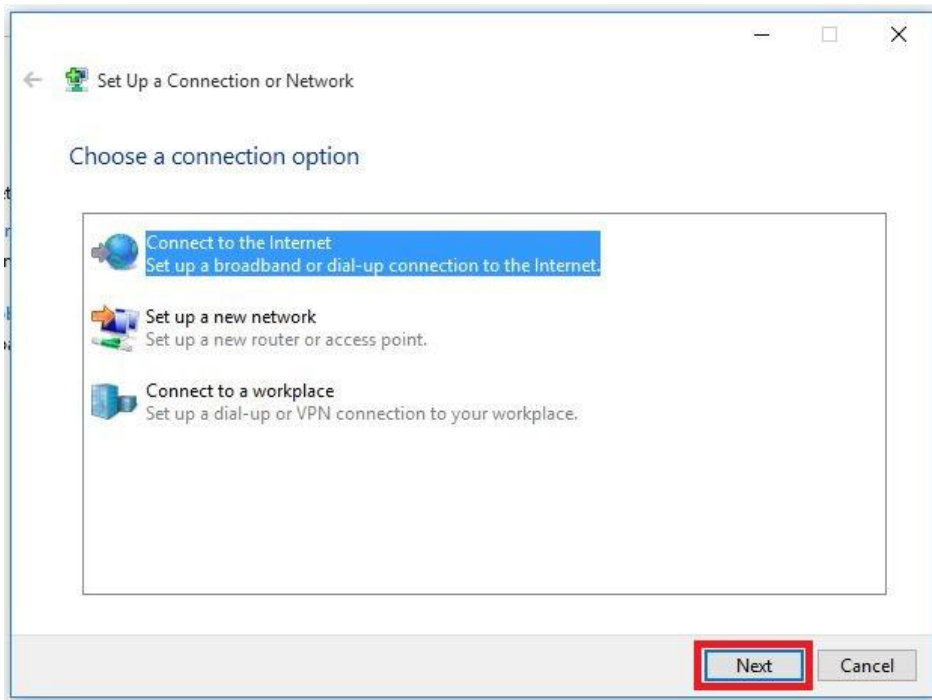
## Step 2:

Click on 'Setup a new connection or network'



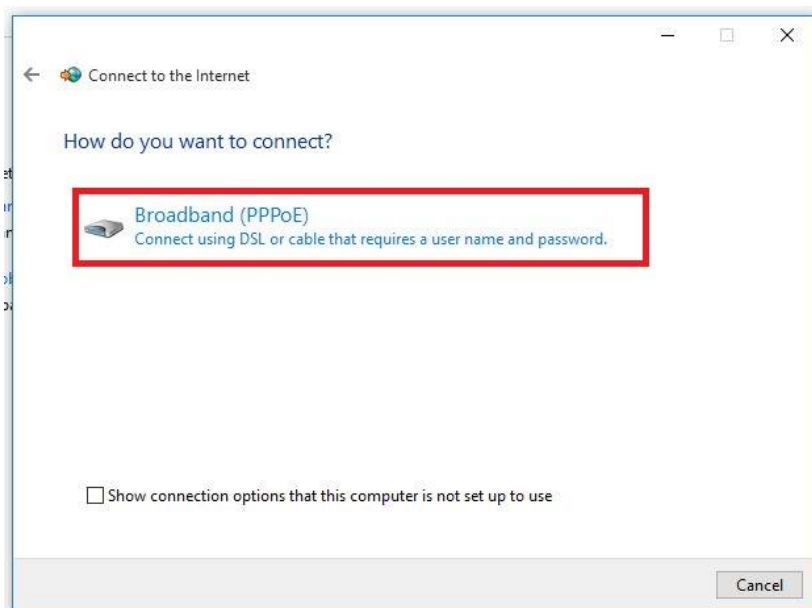
### Step 3:

Click on 'Next'



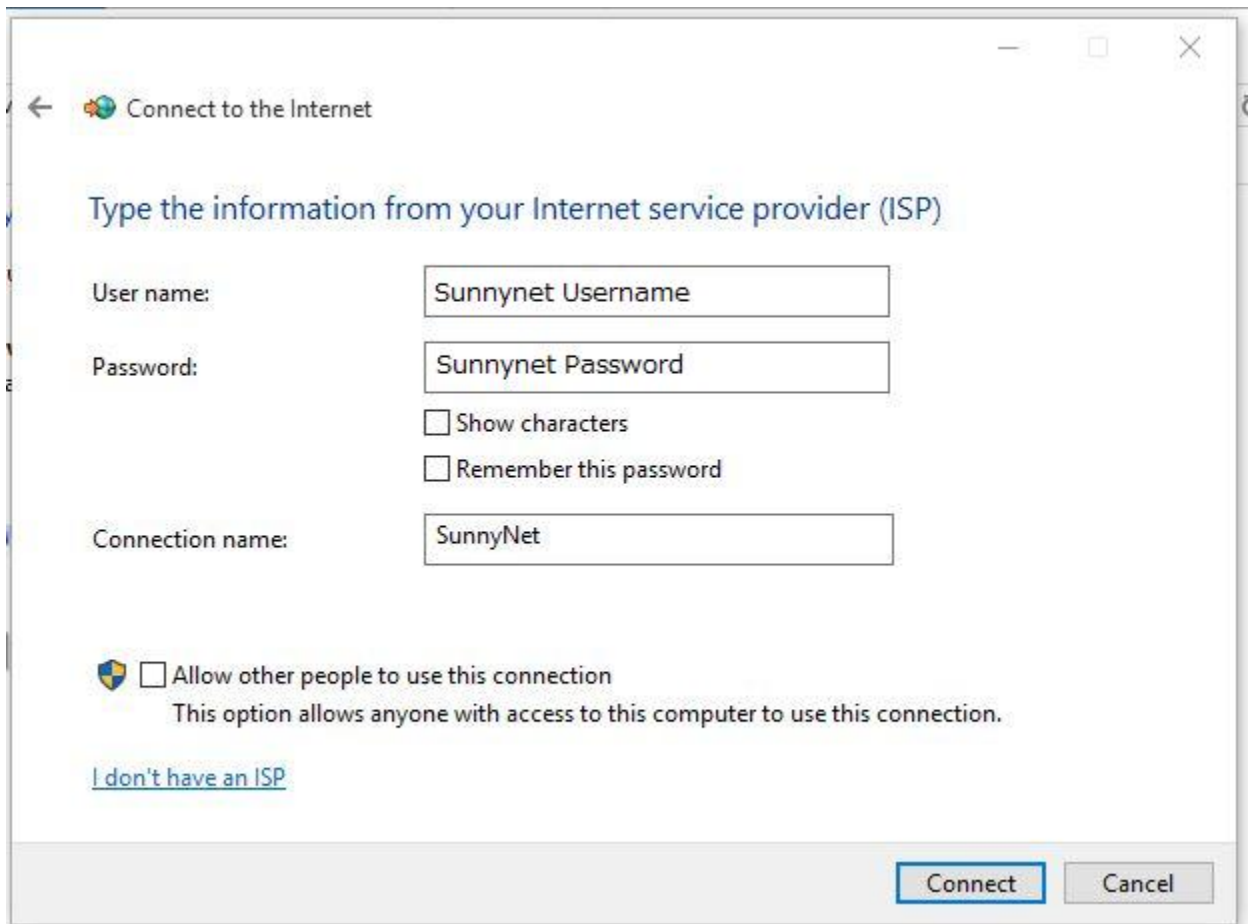
### Step 4:


Click on 'Broadband (PPPoE)'



## Step 5:

Put in the information we have provided you with, and then click on connect



←  Connect to the Internet

Type the information from your Internet service provider (ISP)


User name:

Password:

Show characters

Remember this password

Connection name:

  Allow other people to use this connection  
This option allows anyone with access to this computer to use this connection.

[I don't have an ISP](#)

## Step 6:

After a few connection tests are completed you should get a connected message. If so, open your browser and start using the internet.