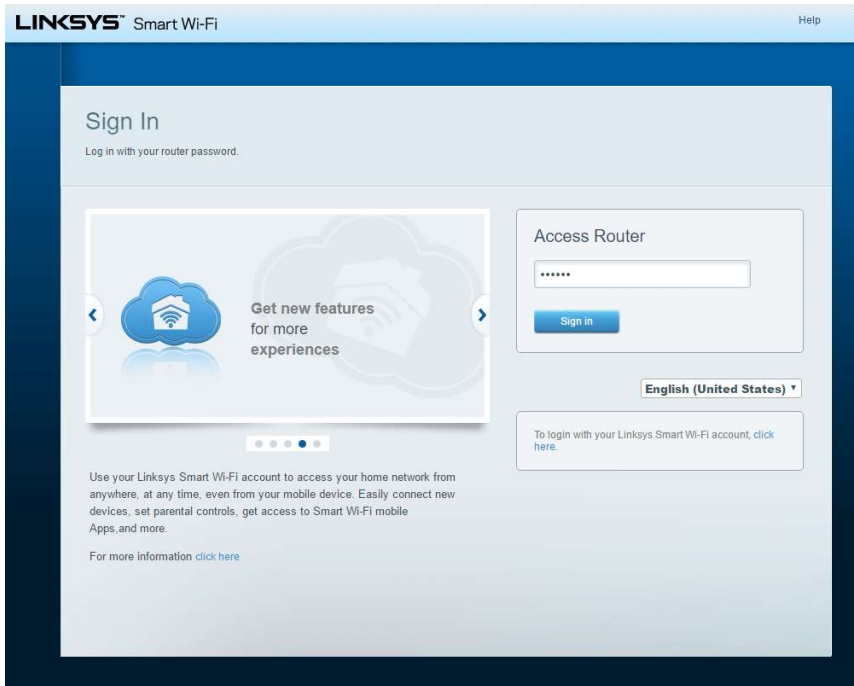
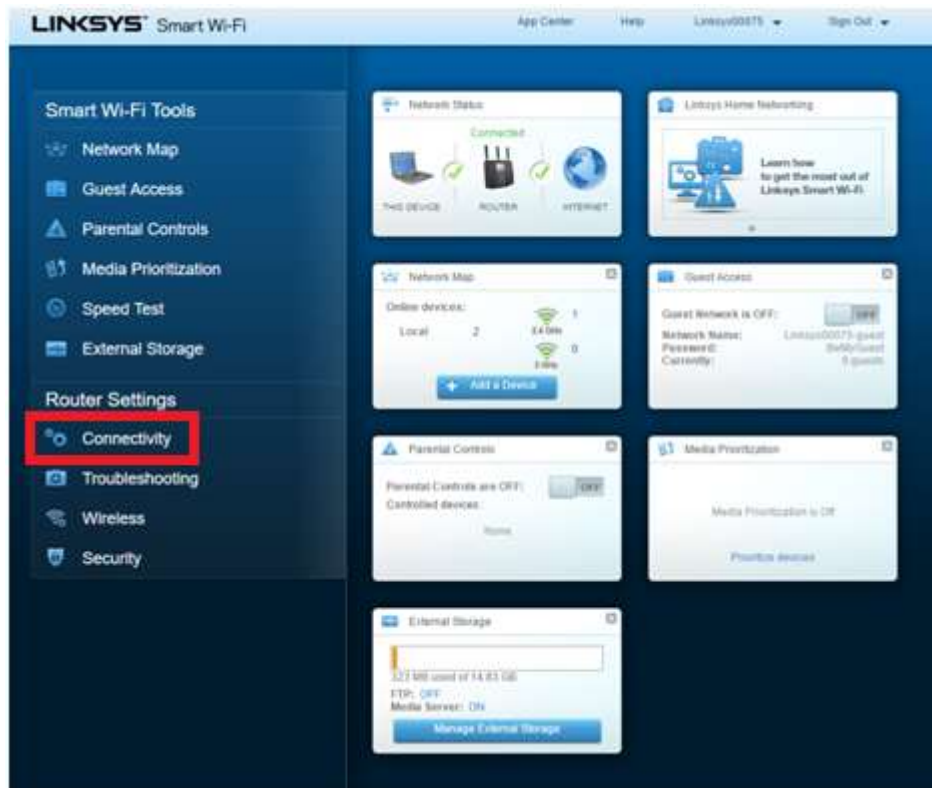


# PPPoE On a Linksys Router

1. Launch a web browser from a computer or wireless device that is connected to the network.
2. Type the ip address of the router, by default it is **192.168.1.1** A login screen displays.



3. Enter the password. The default password is **admin**. The user name and password are case-sensitive. The BASIC Home screen displays.



4. Select **Connectivity**.

5. Click on the tab that says **Internet Settings** and click on the Edit link to make changes.

Connection Type: PPPoE

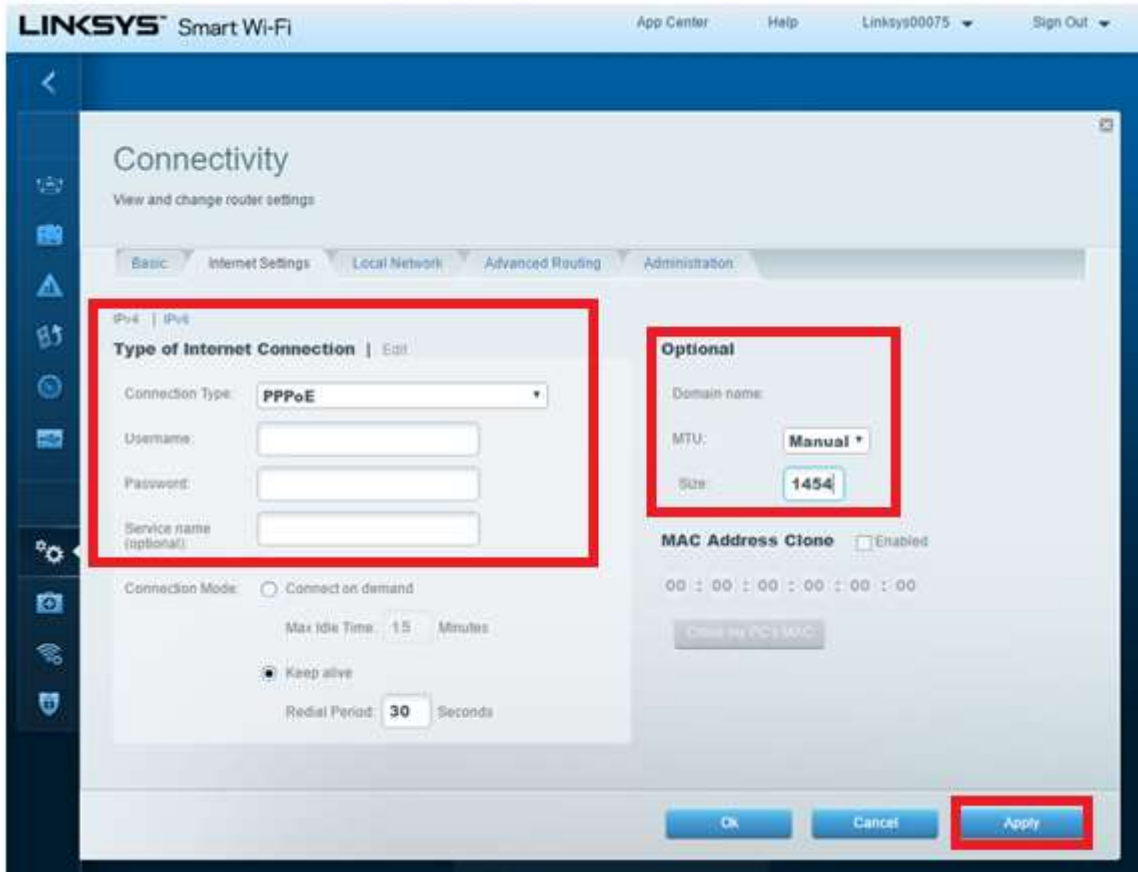
Username: Sunnynet Username

Password: Sunnynet Password

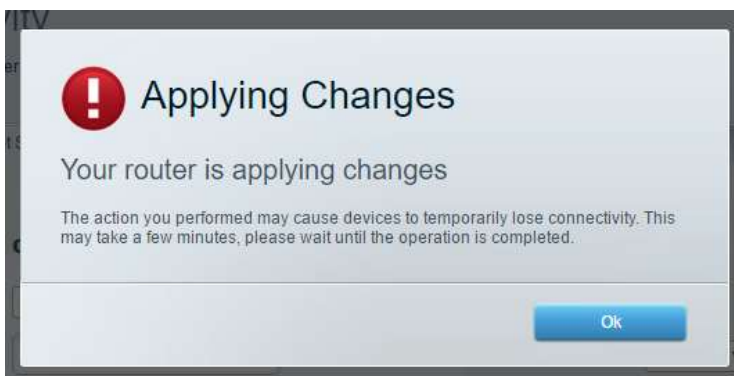
Service Name: Sunnynet (Optional)

MTU: Manual

Size: 1454



6. After making the changes, press the **Apply** button.



7. Click on **Ok**, when the screen updates, your changes have been applied and the internet should be online.